

You are receiving this email because you have expressed an interest in NVBIA. Don't forget to add NVBIAupdate@nvbia.com to your address book so we'll be sure to land in your inbox!

You may [unsubscribe](#) if you no longer wish to receive our emails.

WEEKLY ENEWS

NORTHERN VIRGINIA BUILDING INDUSTRY ASSOCIATION

ALEXANDRIA ARLINGTON FAIRFAX FAUQUIER LOUDOUN PRINCE WILLIAM



WALSH COLUCCI
LUBELEY & WALSH PC

NORTHERN VIRGINIA'S REAL ESTATE LAW FIRM

[LEARN MORE](#)

LAND USE & ZONING
REAL ESTATE TRANSACTIONS
LITIGATION
BUSINESS TRANSACTIONS
EMINENT DOMAIN
ESTATE PLANNING

703.528.4700

2018 Business Partners

PRESIDENT'S CLUB ECHELON

Dominion Energy
George Mason Mortgage
McLean Mortgage
Corporation
MVB Mortgage
Wells Fargo Home Mortgage

PRESIDENT'S CLUB EXCLUSIVE

PulteGroup
Sight and Sound Systems
TW Perry
William A. Hazel, Inc.

PRESIDENT'S CLUB ELITE

Annandale Millwork / Allied
Systems Corp
Bohler Engineering
Buhl Electric
Masonite International
Staged Interior
Van Metre Homes
Washington Gas
Willowsford

CHAMPIONS

Falcon Heating & Air
Conditioning Inc
SunTrust Mortgage

HEROES

Bowman Consulting Group
Cox Business
Dewberry
Elm Street Development
Farms and Acreage, Inc.
KT Enterprises, Inc.

REGIONAL

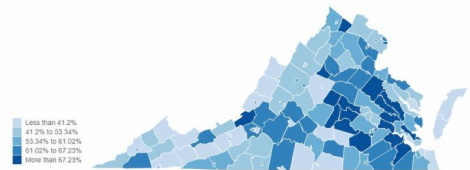
[Visualization: Virginians Employed Outside Locality of Residence](#)

The Virginia Public Access Project

11/28/2018

To understand how sensitive Virginia consumers are to the price of gasoline, look at commuting patterns. Many people live in one locality and work in another.

The percentage of Virginians who work outside the city/county of residence ranges from a low of 25.1% in Halifax County to a high of 83.7% in Craig County.



[Supreme Court Unanimously Sides with NAHB Members in Dusky Frog Case](#)

National Association of Home Builders

11/28/2018

The U.S. Supreme Court Tuesday handed down a decision in *Weyerhaeuser Co. v. United States Fish and Wildlife Service*, giving a huge victory to two NAHB members and land developers across the country. The case examined the Fish and Wildlife Service's designation of over 1,500 acres of private property in Louisiana as "critical habitat" for the endangered dusky gopher frog.



FAIRFAX

[Cityline Looking to Add Interim Uses at McLean Construction Site](#)

InsideNOVA, Brian Trompeter

12/03/2018

Land Design Consultants, Inc.
 Stonewall Concrete, Inc.
 The Washington Post
 Wetland Studies & Solutions,
 Inc.

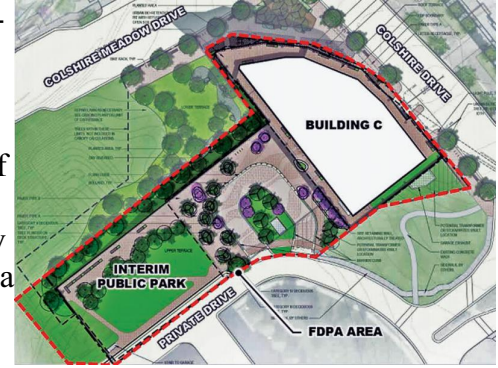
PATRIOTS

christopher consultants
 John Yannetti - Citizens One
 Odin, Feldman & Pittleman,
 P.C.
 Pennoni
 S W Rodgers Company
 The Engineering Groupe
 The IDI Group Companies
 Thompson Greenspon
 Toll Brothers
 Total Development Solutions
 TYPAR/Snavely Forest
 Products
 United Bank
 Walsh, Colucci, Lubeley &
 Walsh

BENEFACTORS

Andersen Windows & Doors
 Champion Title &
 Settlements
 ECS Mid-Atlantic, LLC
 John Marshall Bank
 Luck Stone Corporation
 Residential Warranty
 Company
 Select Construction
 Company Inc
 Sterling Mirror and Glass
 Walker Title LLC

Eventually, Cityline Partners LLC's 1.66-acre property south of the McLean Metro station will be home to two office towers and one residential building totaling more than 1 million square feet of development. But in the meantime, company officials will ask Fairfax County to allow interim uses - including possibly a beer garden - on the site.



Fairfax Jobless Rate Holds Steady at 2.3% in Latest Report

InsideNOVA
 11/30/2018

Despite a slight uptick, Fairfax County's unemployment remained among lowest in the commonwealth in October, according to new figures reported by the Virginia Employment Commission Nov. 29. With 620,672 county residents in the civilian workforce and 14,645 looking for jobs, Fairfax's unemployment rate of 2.3 percent in October was unchanged from September. The modest rate change was emblematic of Northern Virginia as a whole, where month-over-month jobless rates in October essentially treaded water from September.

UNEMPLOYMENT RATES, OCTOBER

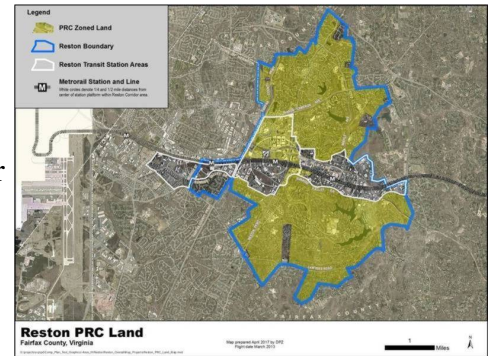
From Virginia Employment Commission, showing non-seasonally-adjusted civilian employment. "Previous" is September. Most recent month's figures are preliminary.

Jurisdiction	Employed	Unemployed	Pct.	Previous
Alexandria	97,370	2,121	2.1%	2.1%
Arlington	148,356	2,896	1.9%	1.8%
Fairfax County	620,672	14,645	2.3%	2.3%
Falls Church	8,072	172	2.1%	2.0%
Loudoun	208,725	4,995	2.3%	2.3%
Prince William	235,593	6,130	2.5%	2.5%
Northern Va.	1,598,446	38,594	2.4%	2.3%
Virginia	4,225,916	119,863	2.8%	2.8%
United States	156,952,000	5,771,000	3.5%	3.6%

Reston Population Increase Takes Big Step Forward

Patch, Dan Taylor
 11/24/2018

Fairfax County is advancing a plan that would include raising the population density limit in Reston, a controversial move that many residents vehemently oppose but officials argue is necessary for the area. After 17 months of public engagement that have included heated confrontations between Reston residents and officials, Fairfax County will move forward with proposed zoning changes that would involve raising the population density limit from 13 person per acre to 15, a move that proponents argue is necessary to support future residential growth and that critics say will lead to runaway growth that current infrastructure cannot support.



LOUDOUN

Loudoun County Taps Alaina Ray as New Director of Planning and Zoning

Loudoun Times-Mirror
 12/01/2018

Loudoun County has promoted Alaina Ray to director of the Department of Planning and Zoning. County Administrator Tim Hemstreet made the announcement Thursday. Ray has served as the department deputy since October 2017. "We had a very strong and competitive pool of applicants from across the country," Hemstreet said in a prepared statement. "Alaina has demonstrated exceptional leadership since her arrival in Loudoun, and I am confident that she will continue to meet the challenges of our fast-growing community in her new role, including the implementation of the Loudoun 2040 Comprehensive Plan once it is adopted by the board in 2019."



[Peterson to Start Over with Avonlea Project in Loudoun After Struggling to Secure Tenants](#)

*Washington Business Journal, Katie Arcieri
11/30/2018*

Peterson Cos. will not advance its \$60 million Avonlea Town Center project in Loudoun County as currently envisioned after the developer struggled to secure tenants beyond the multiplex it signed early on. Cinopolis, the upscale movie theater chain that agreed in 2015 to open an 11-screen theater at Avonlea, is out, at least for now, as Peterson is in the process of planning a new mixed-use town center with retail, dining, entertainment, office and residential components. The new project will be spread across both the Avonlea tract as well as the adjacent 50-acre Bryant property, which Peterson also owns.

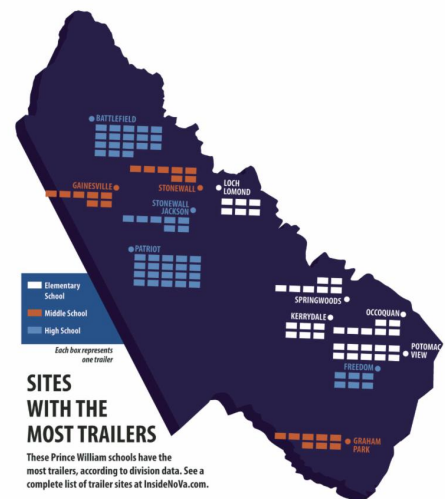


PRINCE WILLIAM

[Prince William County Leaders Call for Audits Before Considering \\$143 Million Plan to Remove Trailers](#)

*InsideNOVA, Emily Sides
11/28/2018*

Prince William County staff and school division officials will audit housing projections and student enrollment figures as leaders plot new schools and classrooms to eliminate trailers at schools countywide. The Board of County Supervisors and the School Board held a joint meeting Tuesday that included a review of the ambitious \$143 million proposal that would be added to the existing 10-year plan for school construction. Corey Stewart, at-large chair of the board of supervisors, said the independent audits will help underscore confidence in the projections.



[Residents Invited to Meetings About Route 28 Environmental](#)

Assessment

Prince William Living

11/28/2018

The Prince William County Department of Transportation is coordinating with the Virginia Department of Transportation and the Federal Highway Administration to prepare for an Environmental Assessment along the Route 28 Corridor. The assessment will evaluate



potential social, economic, and environmental effects associated with proposed transportation improvements in the corridor between Sudley Road in Prince William County and Compton Road in Fairfax County. Additionally, potential alternatives for extending Godwin Drive will be evaluated.

HOMEAID

[Support HomeAid While You Shop with AmazonSmile and Other Ways to Give This Holiday Season](#)

HomeAid Northern Virginia

Did you know that Amazon will donate 0.5% of the price of your purchase to HomeAid when you do your holiday shopping on AmazonSmile?



Go to smile.amazon.com and select HomeAid Northern Virginia (search for Housing Trust Fund of Northern Virginia, Inc.) as your charity. Learn more about AmazonSmile and [all the other ways you can support HomeAid on our website](#).

UPCOMING EVENTS



**Custom Builders Council
Holiday Mixer**

December 6, 2018

[Register Here](#)

**REFC Market Wrap-Up
and Panel Discussion**

December 11, 2018

[Register Here](#)

**WMSMC Design
Trends and Look
Ahead to 2019**

January 18, 2018

[Register Here](#)



www.nvbia.com



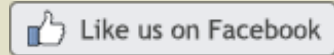
www.homeaidnova.org



www.nahb.org/savings



www.hbarebates.com



Join us on Facebook to hear about the latest news and events from NVBIA or visit our [online calendar](#)

If you no longer want to receive emails from this email group please contact Briggitt Rutherford at brutherford@nvbia.com. Unsubscribing by clicking the link below will remove you from all email groups and you will no longer receive any emails.